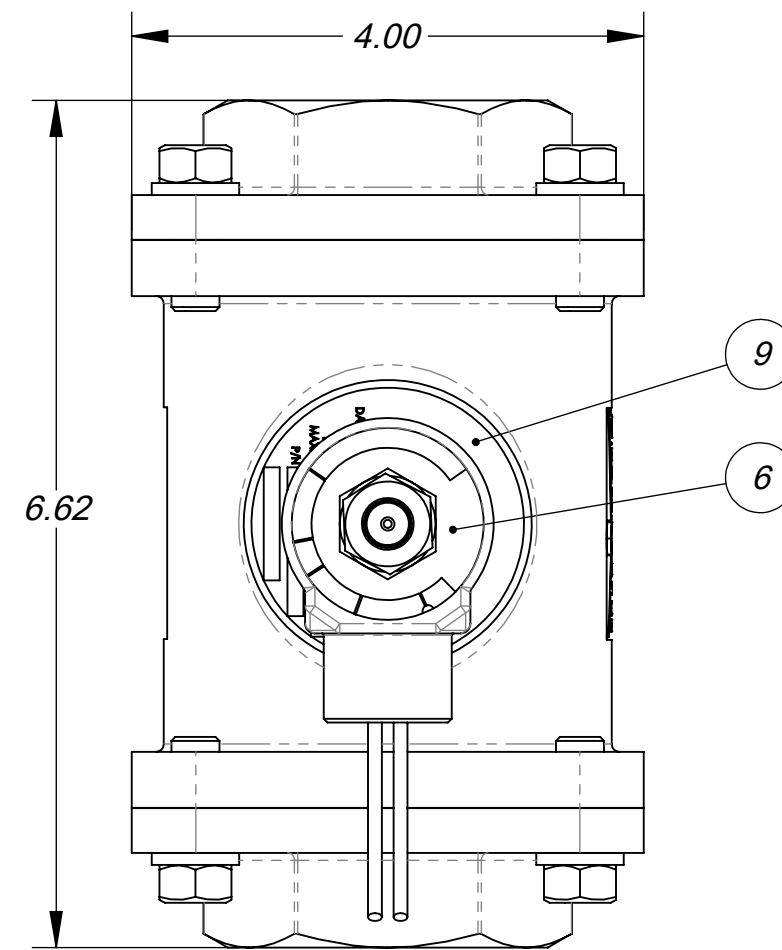


310424-SM-CC-EC-VV



ITEM NO.	PART NUMBER	DESCRIPTION	QTY.
1	01-0151	SCR., 3/8-16 X 1.00, HEX HD. CAP, ZN	8
2	01-0200	WASHER, LOCK, 3/8 REGULAR ZINC	8
3	01-2023-2	SCREW, RIVET, #2 X .188, SS	2
4	03-1179	BODY, P/P SOL. ADAPTOR	1
5	03-1180	EXHAUST ADAPTOR	1
6	03-4001	NAMEPLATE, SERIES 20 SOL. OPP.	1
7	04-01-010	O-RING, BUNA 70, #010	1
8	20-1708	BODY, 1 1/4, 1 1/2 NPT T-O-M	1
9	20-1890	NAME PLATE, 1 1/4 -2 1/2 NPT, T-O-M	1
10	SEE TBL (CC)	CENTER CORE	1
11	SEE TBL (EC)	END CAP 1 1/2	2
12	SEE TBL (SM)	SLEEVE	1
13	SEE TBL (VV)	SOLENOID ASSY	1

- NOTES:**
- PILOT PRESSURE TO MEDIA PRESSURE RATIO: 1:1.
  - OPERATING PRESSURE: 150 PSI MAX.
  - TEMPERATURE RANGE: -30° F TO 225° F.
  - PRIMARY OPERATOR: DIRECT SOLENOID OPERATOR.
  - SERVICE MEDIA: LIQUIDS AND INERT GASES.
  - SLEEVE MATERIAL: SEE TABLE SLEEVE MAT. OPTIONS (SM)  
FOR ALL OTHERS CONSULT THE FACTORY.
  - SOLENOID VOLTAGE: AC OR DC.
  - FOR MAXIMUM SLEEVE LIFE, THE PILOT TO MEDIA PRESSURE DIFFERENTIAL, SHOULD NOT EXCEED 20 PSI. FOR MEDIA PRESSURE BELOW 50 PSI, THE PILOT PRESSURE IS MEDIA PRESSURE PLUS 15 PSI.

**SLEEVE MATERIAL OPTIONS (SM)**

CODE	MATERIAL	PART NO.
STD	BUNA - N	20-1112
26	VITON	20-1113
29	EPR	20-1114

**CENTER CORE OPTIONS (CC)**

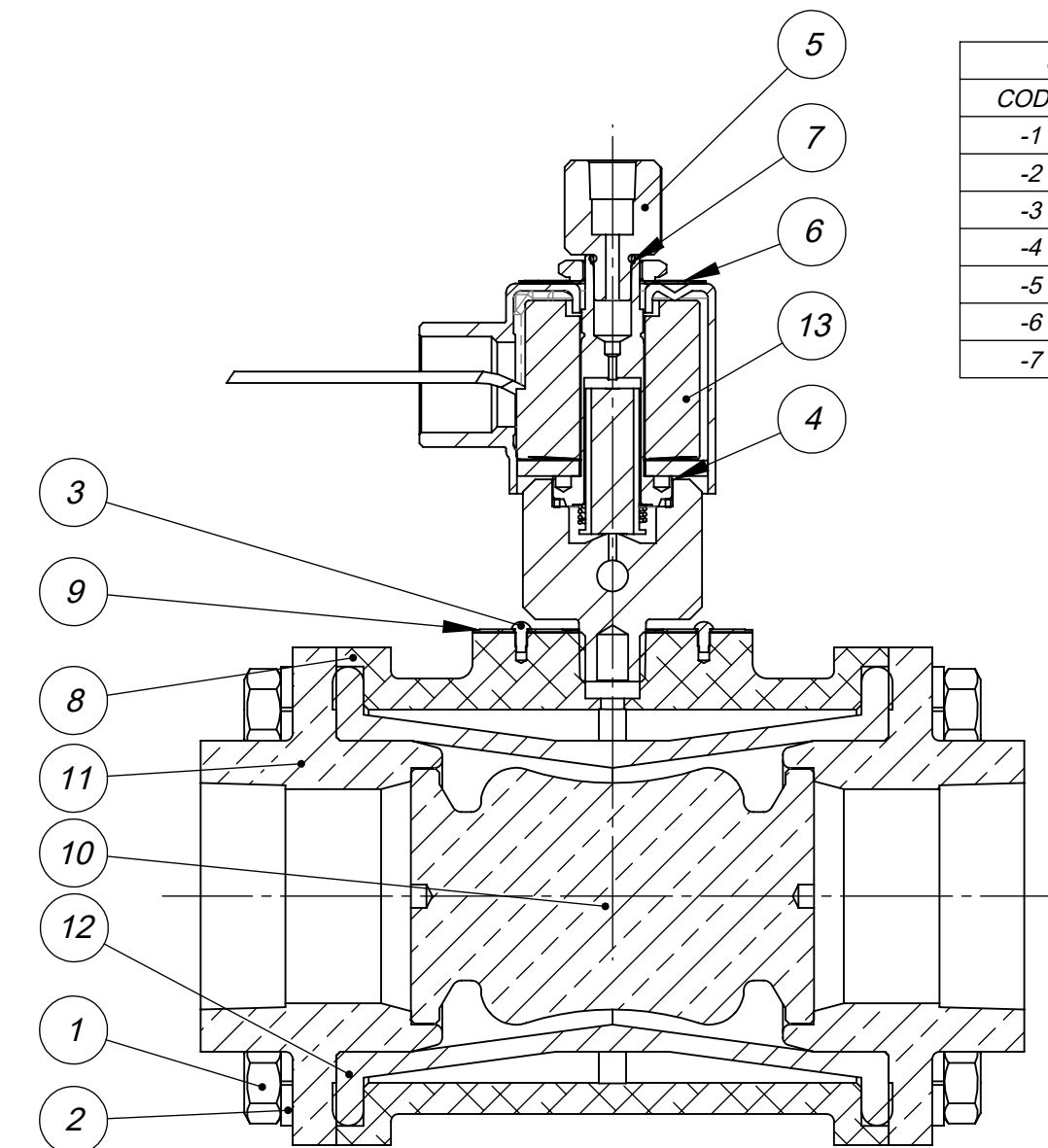
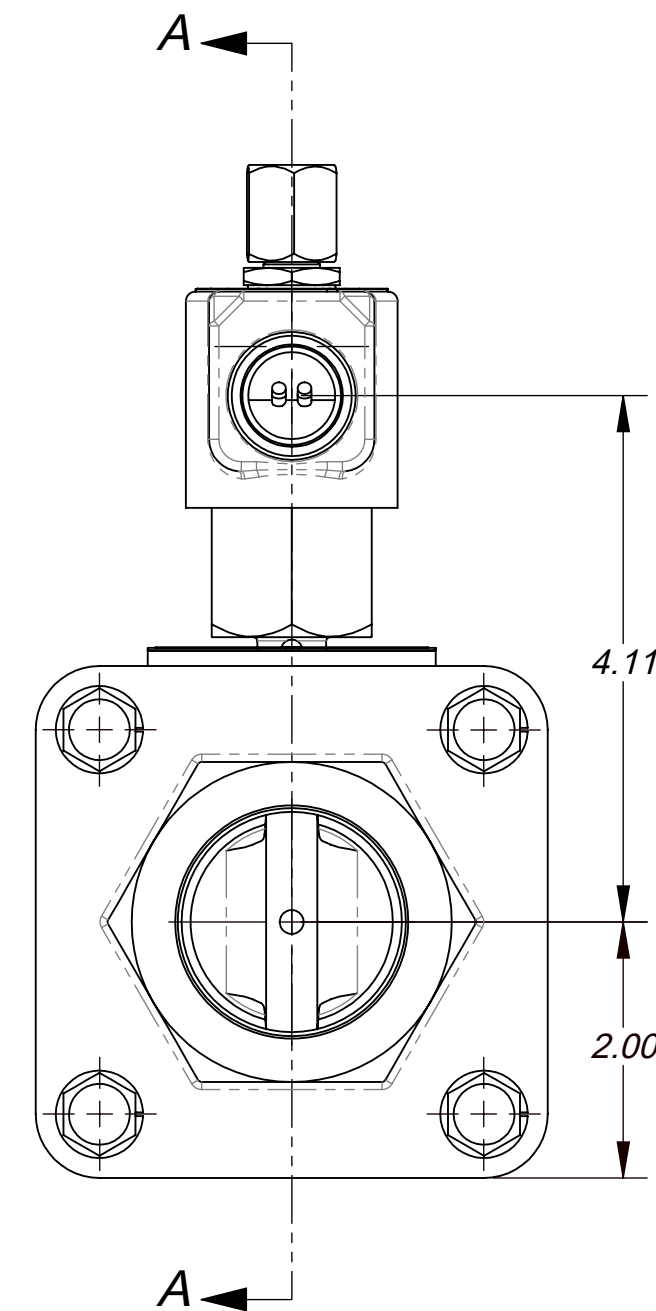
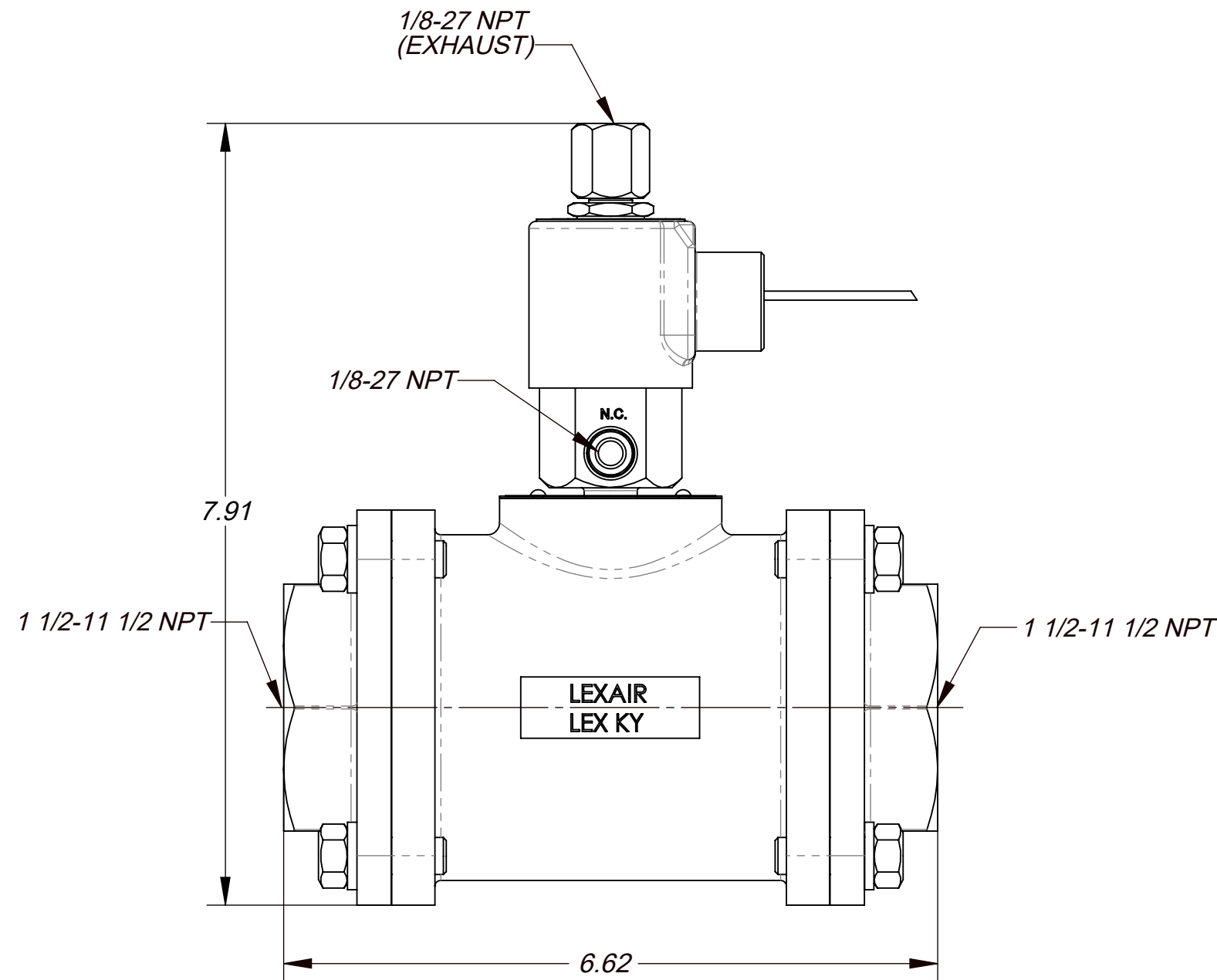
CODE	MATERIAL	PART NO.
STD	NI PLT BRASS	20-1141

**END CAP OPTIONS (EC)**

CODE	MATERIAL	PART NO.
STD	NI PLT BRNZE	20-1127

**SOLENOID OPTIONS (VV)**

CODE	VOLTAGE	PART NO.
-1	120V/60Hz	03-3701
-2	240V/60Hz	03-3702
-3	480V/60Hz	03-3703
-4	6V DC	03-3704
-5	12V DC	03-3705
-6	24V DC	03-3706
-7	24V/60Hz	03-3707



SECTION A-A  
SCALE 1:1.5

THIS DOCUMENT AND ITS CONTENTS ARE THE PROPERTY OF LEXAIR, INC. THEY ARE FURNISHED TO YOU ON THE FOLLOWING CONDITIONS: NO RIGHT OR LICENSE IN RESPECT OF THIS DOCUMENT OR ITS CONTENTS IS GIVEN OR WANTED IN SUPPLYING THIS DOCUMENT TO YOU. THIS DOCUMENT OR ITS CONTENTS ARE NOT TO BE USED OR TREATED IN ANY MANNER INCONSISTENT WITH THE RIGHTS OF LEXAIR, INC. OR TO ITS DETRIMENT AND ARE NOT TO BE COPIED, REPRODUCED, OR DISCLOSED, OR EXCEPT WITH ITS PRIOR WRITTEN CONSENT.

**REVISIONS**

<b>A</b>	REDRAWN TO CURRENT ENG. STDS. ECL: 06113 10-16-06 HWP TPO
<b>B</b>	REDRAWN TO CURRENT ENG. STDS. ECL: 21032 06-22-21 TES

<b>Tolerances Unless Otherwise Specified:</b>		MATERIAL SPEC.		PC. NO.: 310424-X	
TYPE	FINISHED	AS CAST	SEE TABLE		
DEC .00	± .015"	± .030"	PROCESS SPEC.		
DEC .000	± .005"	± .010"	SEE TABLE		
FRACTIONAL	± 1/64"	± 1/32"	CAD FILE: 310424.slddrw		
ANGLES *	± 1/2°	± 1°	<b>C</b> <b>310424</b>		
FINISH 175 µ in.					
<b>SO, T-O-M, 1 1/2" NPT</b>					
<b>Lexair, Inc.</b>			DRAWN	CHECKED	APRVD.
2025 Mercer RD, Lexington, Kentucky 40511			HWP	TPO	TPO
			10-16-06	10-16-06	10-16-06
			SHEET NO. 1 of 1		SHEETS
			SCALE 1:2		
			APPROX. WT. 11.096 lbs.		

ECL: 06113